

## 1 True False

1. UDP uses congestion control.
2. Flow control slows down the sender when the network is congested.
3. For TCP timer implementations, every time the sender receives an ACK for a previously unACKed packet, it will recalculate ETO.
4. CWND (congestion window) is usually smaller than RWND (receiver window).
5. AIMD is the only "fair" option among MIMD, AIAD, MIAD, and AIMD.

## 2 Impact of Fast Recovery

Consider a TCP connection, which is currently in Congestion Avoidance (AIMD).

- The last ACK sequence number was 101.
- The CWND size is 10 (in packets).
- The packets #101-110 were sent at  $t=0, 0.1, \dots, 0.9$  (sec), respectively.
- The packet #102 is lost only for its first transmission.
- RTT is 1 second.

Fill in the tables below, until the sender transmits the packet #116.

1. Without fast recovery:

- On new ACK,  $CWND+ = \frac{1}{[CWND]}$
- On triple dupACKs,  $SSTHRESH = \left\lfloor \frac{CWND}{2} \right\rfloor$ , then  $CWND = SSTHRESH$ .

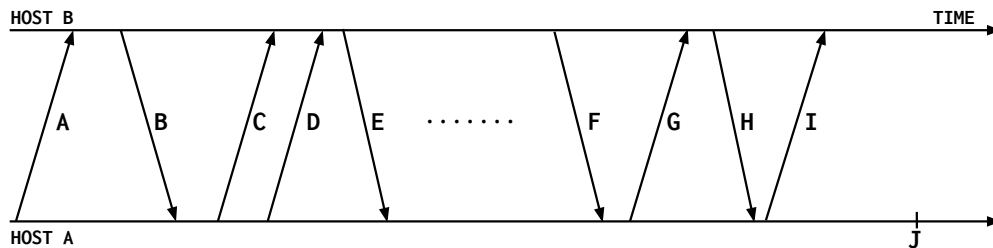
Time (sec)	Receive ACK (due to)	CWND	Transmit Seq # (mark retransmits)
1.0	102 (101)	$10 + \frac{1}{10} = 10.1$	111
1.2	102 (103)	10.1	/
1.3	102 (104)	10.1	/

2. With fast recovery:

- On triple dupACKs,  $SSTHRESH = \left\lfloor \frac{CWND}{2} \right\rfloor$ , then  $CWND = SSTHRESH + 3$ , enter fast recovery.
- In fast recovery,  $CWND+ = 1$  on every dupACK.
- On new ACK, exit fast recovery,  $CWND = SSTHRESH$

Time (sec)	Receive ACK (due to)	CWND	Transmit Seq # (mark retransmits)
1.0	102 (101)	$10 + \frac{1}{10} = 10.1$	111
1.2	102 (103)	10.1	/
1.3	102 (104)	10.1	/

### 3 Flags



The above figure shows the life cycle of a TCP connection with normal termination - that is, connection establishment, data exchange, and teardown.

1. For each of the arrows, choose whether it is a SYN, ACK, data, FIN or RST packet. A single arrow might have more than one of these flags set.

A:	D:	G:
B:	E:	H:
C:	F:	I:

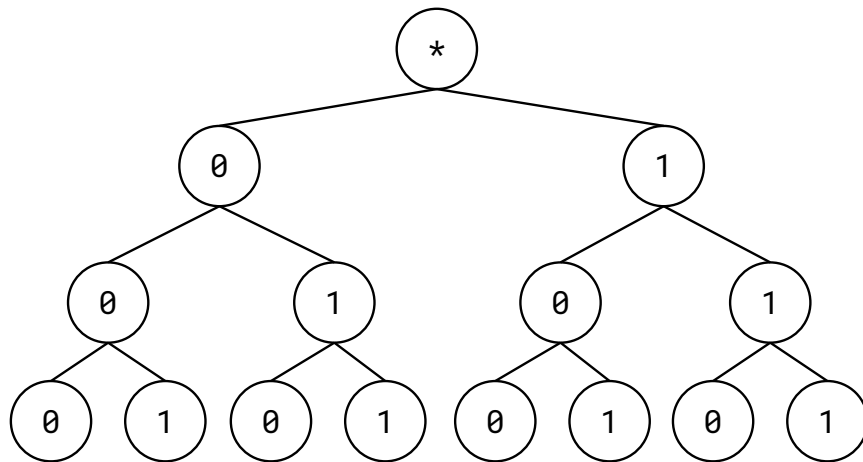
2. When host A sends packet I, it sets a timer that ends at point J. What is the purpose of this timeout?

## 4 Midterm Review: Longest Prefix Matching

Your routing table contains the following entries:

Address	Port
01*	Port 1
000	Port 2
001	Port 1
1**	Port 2
101	Port 1

Mark the entries on the following tree. Then, find a more concise representation of the table.



Address	Port

\*You may not need to fill in all rows.